

INSTRUMENT APPROACH CHART - ICAO

SHERBURN-IN-ELMET

RNP

RWY 28

(ACFT CAT A,B)



A/G 122.610

SHERBURN RADIO

AD ELEVATION 26

THR ELEVATION 25

OBSTACLE ELEVATION
870 AMSL
(845) (ABOVE THR)

BEARINGS ARE MAGNETIC

TRANSITION ALTITUDE
3000

WAYPOINTS

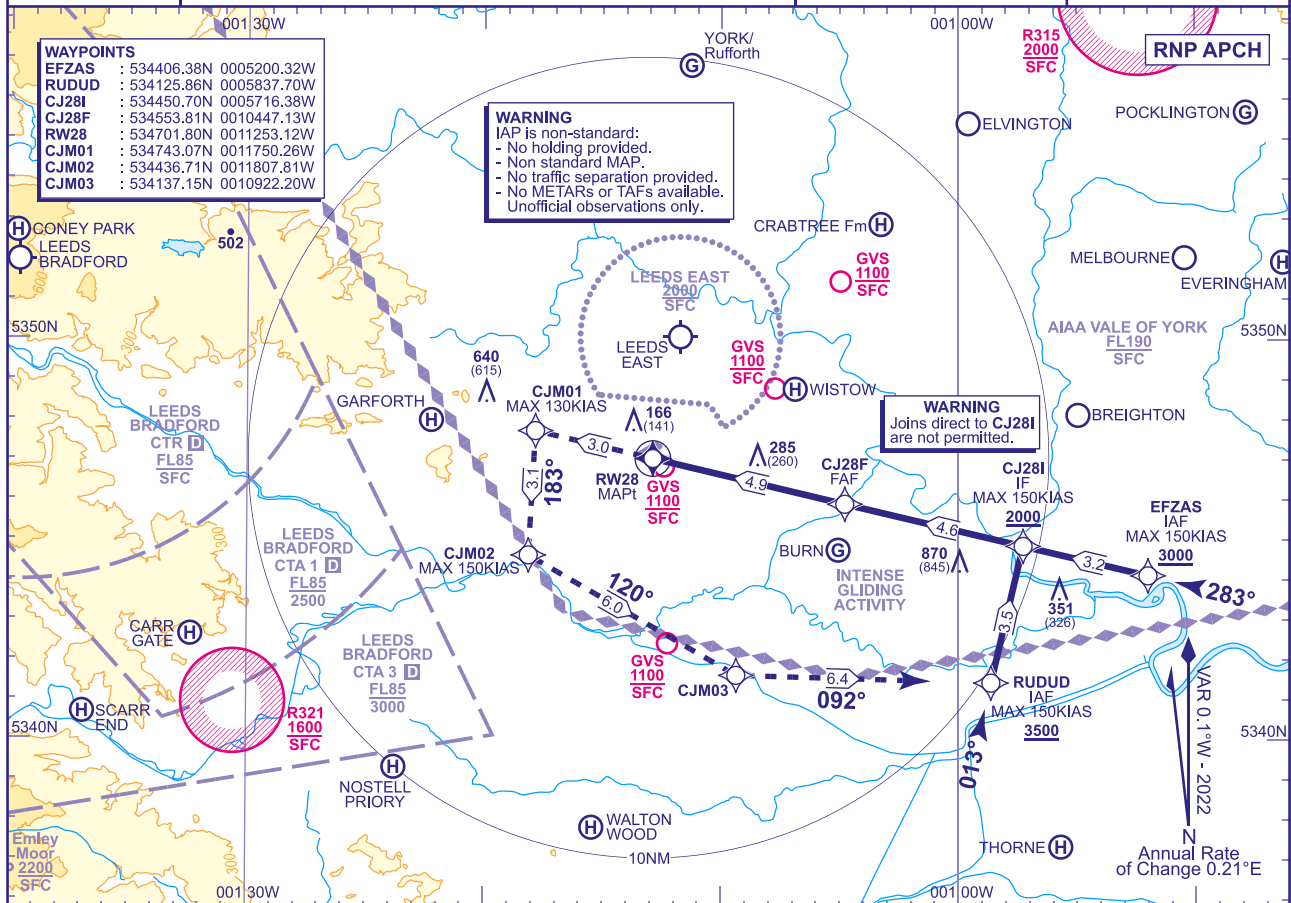
EFZAS : 534406.38N 0005200.32W
RUDUD : 534125.86N 0005837.70W
CJ28I : 534450.70N 0005716.38W
CJ28F : 534553.81N 0010447.13W
RW28 : 534701.80N 0011253.12W
CJM01 : 534743.07N 0011750.26W
CJM02 : 534436.71N 0011807.81W
CJM03 : 534137.15N 0010922.20W

WARNING

IAP is non-standard:
- No holding provided.
- Non standard MAP.
- No traffic separation provided.
- No METARs or TAFs available.
Unofficial observations only.

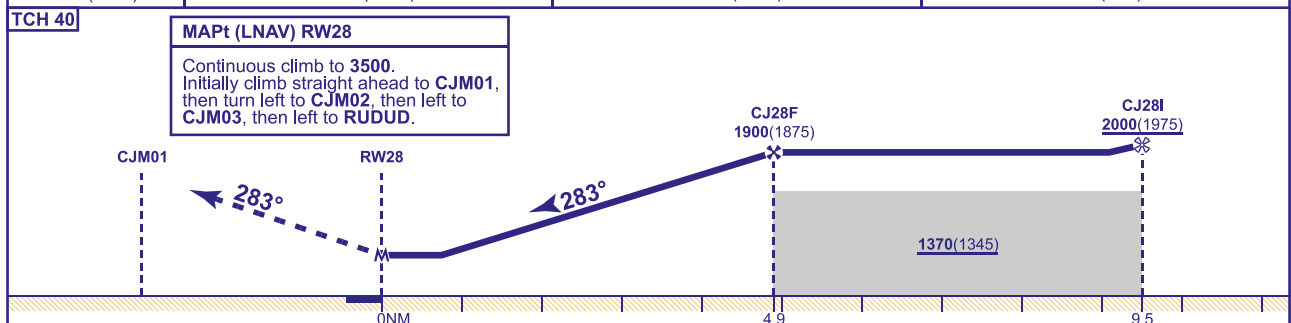
WARNING

Joins direct to CJ28I
are not permitted.



RECOMMENDED PROFILE Gradient 6.12%, 372FT/NM

NM to RW28	4	3	2
ALT (HGT)	1550(1525)	1180(1155)	810(785)



Aircraft Category		A	B	Rate of descent	G/S KT	160	140	120	100	80
OCA (OCH)	LNAV	540(515)	540(515)		FT/MIN	990	870	740	620	500
VM(C)OCA (OCH AAL)	Total Area	630(604)	630(604)							

NOTE 1 Caution: Procedure lies close to Leeds CTA/CTR. Aircraft not in receipt of a zone transit clearance must remain clear.

2 Caution: Proximity of Leeds East Airport, 3NM to the north.

CHANGE (13/23): GVS RICCALL REMOVED.

AERO INFO DATE 03 OCT 23

AD 2-EGCJ-8-2